

WOODLANDS NORTH
GROVE



**HDB'S SALES LAUNCH
JULY 2025**

BTOgether

IMPORTANT NOTES

HDB precincts are planned to serve the evolving needs of the community. There are spaces catered for future inclusion of amenities/ facilities (such as preschools, eldercare facilities, education centres, residents' network centres, day activity centres, etc), commercial facilities (such as shops and eating houses), mechanical and electrical rooms, and such other facilities depending on the prevailing needs, even after residents have moved into the precincts. These spaces could be in the void decks, common property, car parks, or stand-alone community buildings.

In addition, housing projects may be located near roads, railways, airbases, construction sites, and land used for non-residential purposes including but not limited to industrial, commercial or utility uses. Hence, residents may experience related disamenities including but not limited to higher noise levels and smell nuisance. We have provided information on the surrounding land use, proposed facilities and their locations in the maps and plans of individual projects, where feasible. All developments and facilities shown (including but not limited to their locations, form, massing and/or building heights) are subject to change and planning approval. The information provided is based on the current planning intent of the relevant authorities and is subject to change from time to time.

This brochure may contain forward-looking statements regarding future developments, projections, estimates, and other statements about HDB's plans, goals, and expectations on the development. Forward-looking statements are not guarantees of future results but are inherently subject to uncertainty, and actual results could differ materially from those anticipated in these statements.

HDB does not undertake any obligation to update or revise any forward-looking statements, whether as a result of new information, future events, or otherwise. The information provided in this brochure is based on current expectations and beliefs, and there can be no assurance that the results and events contemplated by the forward-looking statements will indeed occur.

Prospective buyers are cautioned not to place reliance on these forward-looking statements. Any reliance on the forward-looking statements is at the sole risk and discretion of the recipient, and HDB disclaims any obligation to update or revise such statements to reflect changes in expectations or events, conditions, or circumstances on which any such statements are based. HDB shall not be responsible in any way for any damage or loss suffered by any person whether directly or indirectly as a result of reliance on such forward-looking statements.





WOODLANDS NORTH GROVE

Nestled along Woodlands North Road, Woodlands North Grove takes its name from the lush Admiralty Park that is adjacent to it. The project comprises 5 residential blocks, including 1 block of rental flats, and a total of 1,148 units of 2-room Flexi, 3-room, 4-room, and 5-room flats across the remaining 4 residential blocks. The residential blocks range from 25 to 33 storeys and will be offered as Standard flats under the new flat classification (<https://www.hdb.gov.sg/cs/infoweb/residential/buying-a-flat/finding-a-flat/standard-plus-and-prime-housing-models>).



Woodlands North Grove is thoughtfully designed with facilities for residents' daily convenience. These include a preschool and a residents' network centre. Residents of all ages can stay active and connect with neighbours at the various green spaces within the project, which feature children's playgrounds, fitness stations, and a hard court. The roof garden atop the Multi-Storey Car Park (MSCP) provides another space for residents to relax.

For a detailed layout of the facilities provided at Woodlands North Grove, please refer to the site plan. Facilities in this project will be accessible to the public.

WOODLANDS



○ MRT Line & Station = = = = Under Construction/ Future Road - - - - Rapid Transit System Link (U/C) (U/C) Under Construction = = North-South Corridor (U/C) MK MOE Kindergarten [Red Dashed Box] Inland Boundary of Woodlands Checkpoint Expansion (Indicative only)

Notes:

- All developments and facilities shown (including but not limited to their locations, form, massing and/or building heights) are subject to change and planning approval. The implementation of such proposed developments and facilities is subject to review from time to time by the relevant authorities.
- Proposed Place of Worship includes examples such as Church, Mosque, Chinese Temple, Hindu Temple, etc.
- Proposed Civic & Community Institution includes examples such as Community Centre/Club, Association, etc.
- Proposed Health & Medical Care includes examples such as Hospitals, Polyclinics, Clinics, Nursing Homes and Elder care Facilities, etc.
- Proposed Industrial Development includes examples such as Clean Industry, Light Industry, General Industry, Special Industry and Business Park Operations.
- The existing/proposed industries shown are located within 500m radius of the Project/Projects (New).
- Kampung Admiralty is an Integrated Development which includes 2-Room Flexi flats, shops, supermarket, hawker centre, medical centre, elder care facilities and preschools.
- The developments and facilities shown (whether existing or proposed) may:
 - Include other ancillary uses allowed under URA's prevailing Development Control guidelines. Some examples include:
 - Places of Worship (e.g. Chinese Temple or Church) may include columbarium,
 - Community Centres/Clubs may include preschools, and schools may be upgraded or built with higher-rise blocks, etc.
 - Be used as temporary construction sites by the relevant authorities.
- The future land use for former school sites are subject to review or changes by the relevant authorities.
- Woodlands Ring Secondary will hold at former Fuchun Secondary School at 21 Woodlands Avenue 1 until December 2028 and relocate to its permanent location at 10 Woodlands Ring Road in January 2029.
- Singapore Sports School will be relocating from Woodlands to Kallang. More details will be shared when ready.
- To support the development of key infrastructure, temporary worker dormitories may be set up near residential areas by relevant authorities.

Scale 0 200 400 Metres
100 300 500



The information contained herein is subject to change at any time without notice and cannot form part of an offer or contract. While reasonable care has been taken in providing this information, HDB shall not be responsible in any way for any damage or loss suffered by any person whether directly or indirectly as a result of reliance on the said information or as a result of any error or omission therein.

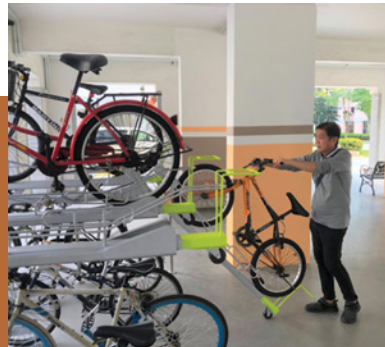
ECO-FRIENDLY FEATURES

To encourage green and sustainable living, Woodlands North Grove will have several eco-friendly features such as:

- Separate chutes for recyclable waste
- Regenerative lifts to reduce energy consumption
- Bicycle stands to encourage cycling as an environmentally-friendly form of transport
- Parking spaces to facilitate future provision of electric vehicle charging stations
- Use of sustainable products in the project
- Active, Beautiful, Clean Waters design features to clean rainwater and beautify the landscapes



**SEPARATE CHUTES
FOR RECYCLABLE
WASTE**



**BICYCLE
STANDS**



**ABC WATERS DESIGN
FEATURES**

SMART SOLUTIONS

Woodlands North Grove will come with the following smart solutions to reduce energy usage, and contribute to a safer and more sustainable living environment:

- Smart-Enabled Homes with provisions to facilitate adoption of smart home solutions
- Smart Lighting in common areas to reduce energy usage
- Smart Pneumatic Waste Conveyance System to optimise the deployment of resources for cleaner and fuss-free waste disposal



EMBRACING WALK CYCLE RIDE

With an increased focus on active and healthy living, the housing precinct is designed with well-connected pathways to make it easier for residents to walk and cycle more as part of their daily commutes to the surrounding amenities and public transport:

- Convenient access and walking distance to public transport
- Safe, pleasant, and welcoming streets for walking and cycling
- Sheltered linkways and barrier free accessibility to facilities
- Wayfinding and signages for orientation and navigation

Residents will be served by bus services and Woodlands North MRT Station. The upcoming Singapore-Johor Bahru RTS Link will also be adjacent to the existing Woodlands North MRT Station. Learn more about transport connectivity in this precinct using MyTransport.sg app at <https://www.lta.gov.sg/content/dam/ltagov/Home/PDF/MTM.pdf>.

FINISHES AND FITTINGS

More than just a well-designed and functional interior, these flats will come with the following finishes and fittings.

2-ROOM FLEXI

Available either on a 99-year lease or short-lease

- Floor tiles in the:
 - Bathroom
 - Household shelter
 - Kitchen
- Wall tiles in the:
 - Bathroom
 - Kitchen
- A sliding partition/ door for the bedroom and folding bathroom door
- Water closet suite in the bathroom
- Grab bars (for 2-room Flexi flats on short-leases)

3-, 4-, AND 5-ROOM

- Floor tiles in the:
 - Bathrooms
 - Household shelter
 - Kitchen/ utility (3-room)
 - Kitchen and service yard (4- and 5-room)
- Wall tiles in the:
 - Bathrooms
 - Kitchen/ utility (3-room)
 - Kitchen (4- and 5-room)
- Water closet suite in the bathrooms

OPTIONAL COMPONENT SCHEME

The Optional Component Scheme (OCS) is an opt-in scheme that provides convenience for our buyers. If you opt-in for OCS, the cost of the optional components will be added to the price of the flat. Please refer to the attached OCS leaflet for details.

LAYOUT IDEAS

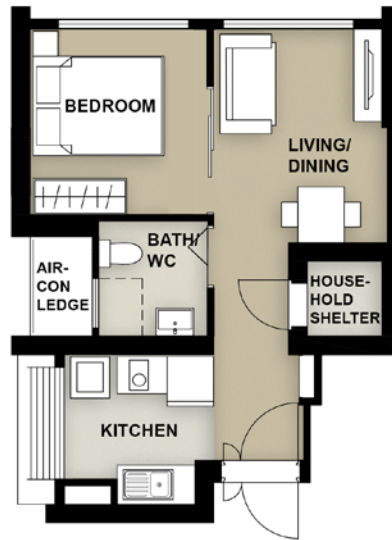
WITHOUT LIVING/ DINING/ BEDROOM FLOOR FINISHES (DEFAULT)

2-ROOM FLEXI (TYPE 1) FLOOR PLAN

(With Suggested Furniture Layout)

Approx. Floor Area 40 sqm

Inclusive of Internal Floor Area of 38 sqm and
Air-con Ledge



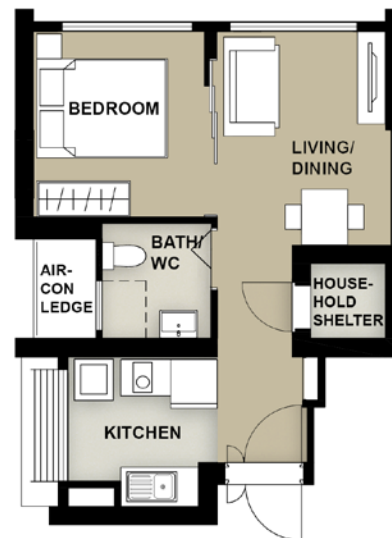
WITH LIVING/ DINING/ BEDROOM FLOOR FINISHES

2-ROOM FLEXI (TYPE 1) FLOOR PLAN

(With Suggested Furniture Layout)

Approx. Floor Area 40 sqm

Inclusive of Internal Floor Area of 38 sqm and
Air-con Ledge



The coloured floor plan is not intended to demarcate the boundary of the flat

WITHOUT LIVING/ DINING/ BEDROOM FLOOR FINISHES (DEFAULT)

2-ROOM FLEXI (TYPE 2) FLOOR PLAN

(With Suggested Furniture Layout)

Approx. Floor Area 48 sqm

Inclusive of Internal Floor Area of 46 sqm and
Air-con Ledge



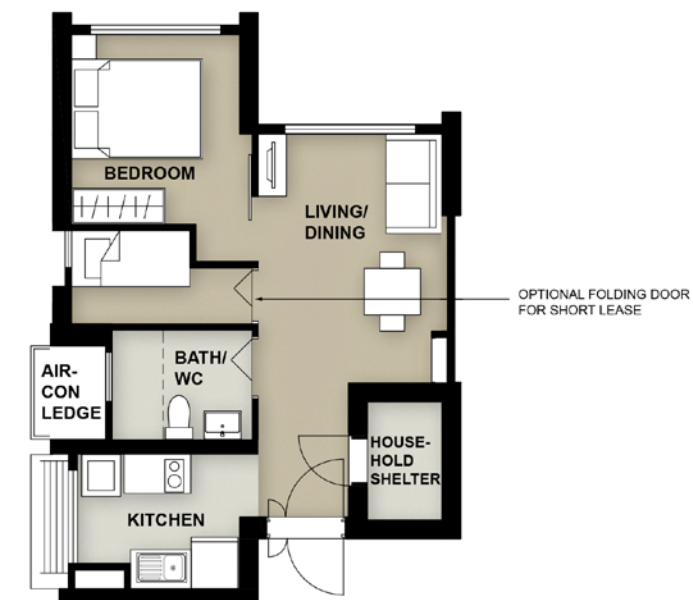
WITH LIVING/ DINING/ BEDROOM FLOOR FINISHES

2-ROOM FLEXI (TYPE 2) FLOOR PLAN

(With Suggested Furniture Layout)

Approx. Floor Area 48 sqm

Inclusive of Internal Floor Area of 46 sqm and
Air-con Ledge



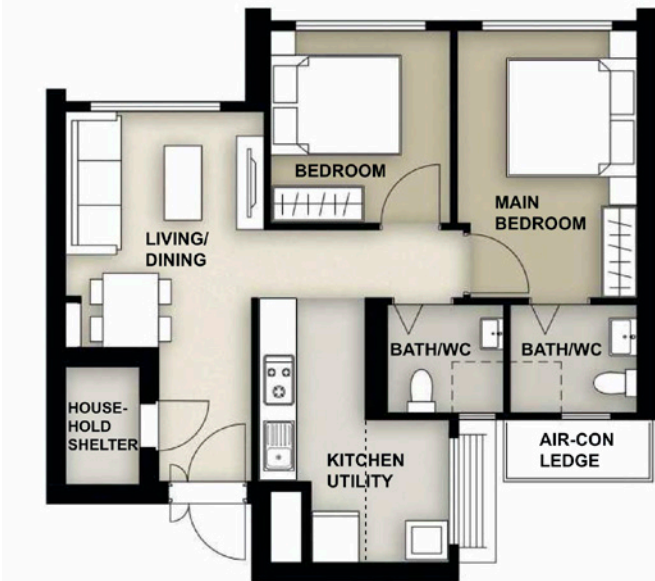
To meet different lifestyle needs,
the 46sqm 2-room Flexi flats come
with a flexible space which flat
buyers can use according to their
preference. This flexible space can
be used for dining, a study or to
place an extra bed.

The coloured floor plan is not intended to demarcate the boundary of the flat

LAYOUT IDEAS

3-ROOM FLOOR PLAN (With Suggested Furniture Layout)

Approx. Floor Area 69 sqm
Inclusive of Internal Floor Area of 66sqm and
Air-con Ledge



To cater to changing lifestyles and to provide more flexibility in the use of kitchen space, HDB has designed the flats with a combined kitchen/utility space.

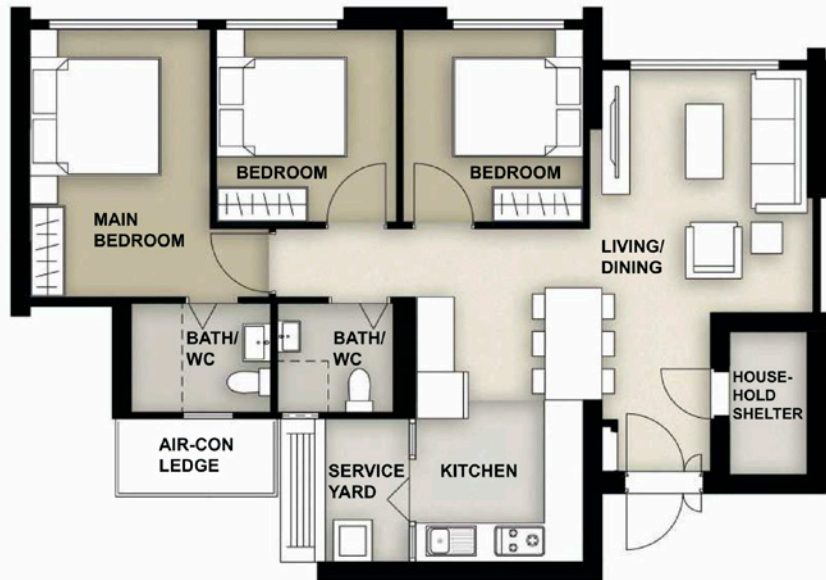
The layout offers homeowners flexibility in configuring the area according to their preferences.

For example, you can add a partition to separate the utility from kitchen, as indicated in the dotted lines.

The coloured floor plan is not intended to demarcate the boundary of the flat

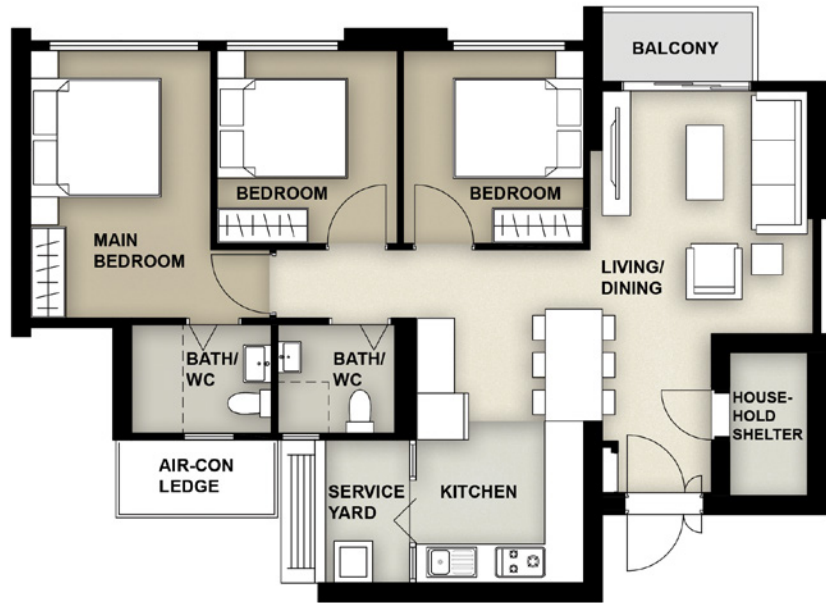
4-ROOM FLOOR PLAN (With Suggested Furniture Layout)

Approx. Floor Area 93 sqm
Inclusive of Internal Floor Area of 90 sqm and
Air-con Ledge



4-ROOM FLOOR PLAN (With Suggested Furniture Layout)

Approx. Floor Area 96 sqm
Inclusive of Internal Floor Area of 93 sqm and
Air-con Ledge



The coloured floor plan is not intended to demarcate the boundary of the flat

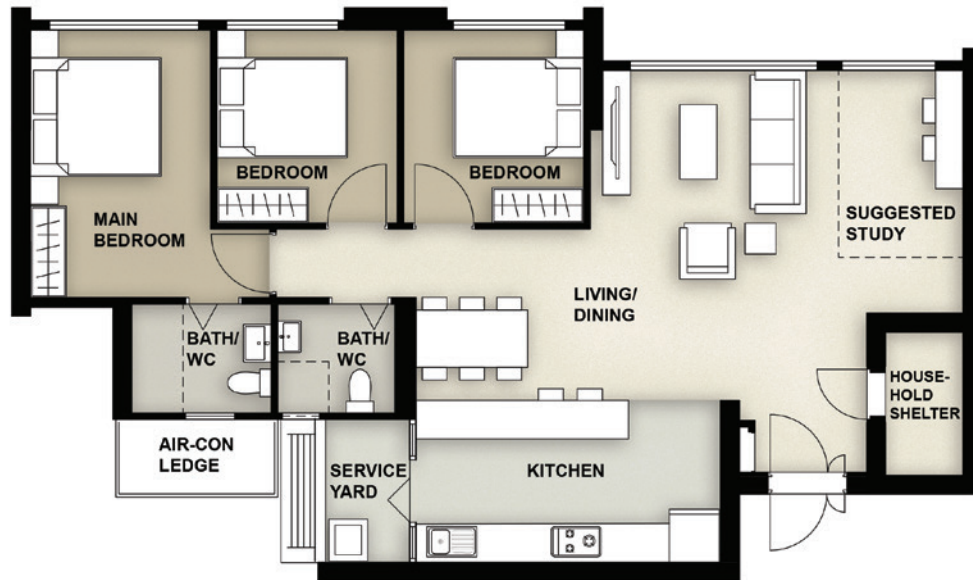
LAYOUT IDEAS

5-ROOM FLOOR PLAN

(With Suggested Furniture Layout)

Approx. Floor Area 113 sqm

Inclusive of Internal Floor Area of 110 sqm and
Air-con Ledge



5-ROOM FLOOR PLAN

(With Suggested Furniture Layout)

Approx. Floor Area 116 sqm

Inclusive of Internal Floor Area of 113 sqm and
Air-con Ledge

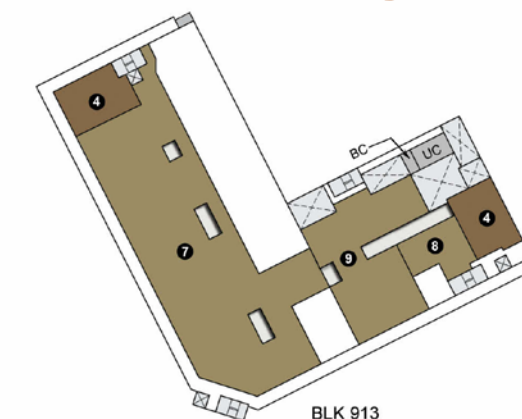


The coloured floor plan is not intended to demarcate the boundary of the flat



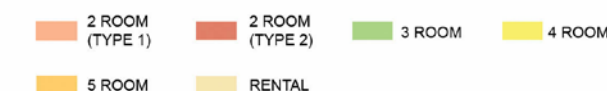
SITE PLAN

WOODLANDS NORTH GROVE



BLK 913
1ST STOREY FLOOR PLAN

FLAT TYPE



PLAY FACILITIES

- 1 CHILDREN PLAYGROUND
- 2 ADULT FITNESS STATION
- 3 ELDERLY FITNESS STATION

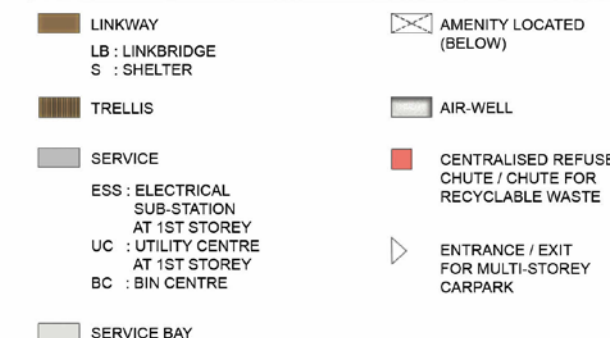
COMMUNAL AREAS

- 4 PRECINCT PAVILION AT 1ST STOREY
- 5 DROP-OFF PORCH
- 6 HARDCOURT

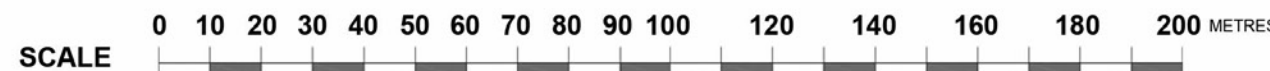
SOCIAL AMENITIES

- 7 PRESCHOOLS AT 1ST STOREY
- 8 RESIDENTS' NETWORK CENTRE
- 9 FUTURE AMENITIES AT 1ST STOREY

OTHERS



APPLICANTS ARE ENCOURAGED TO VISIT THE PLACE BEFORE BOOKING A FLAT.

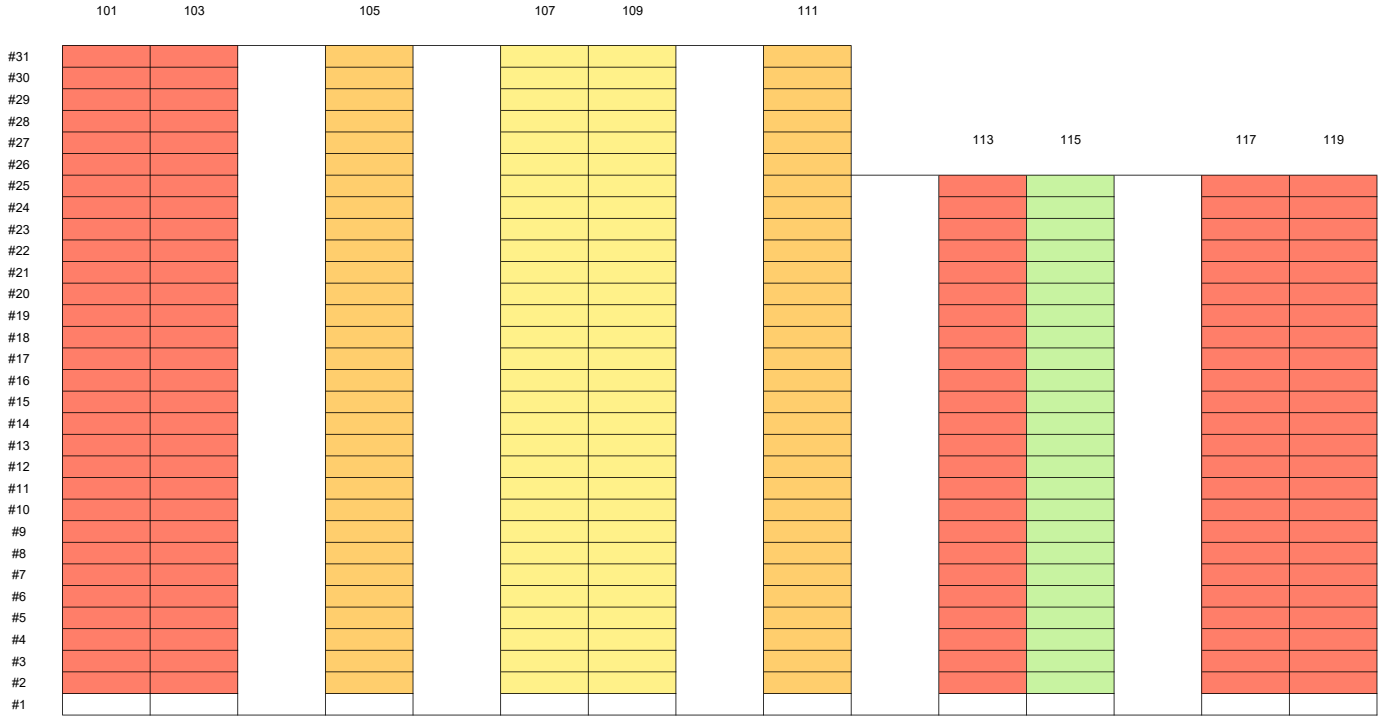


Notes:

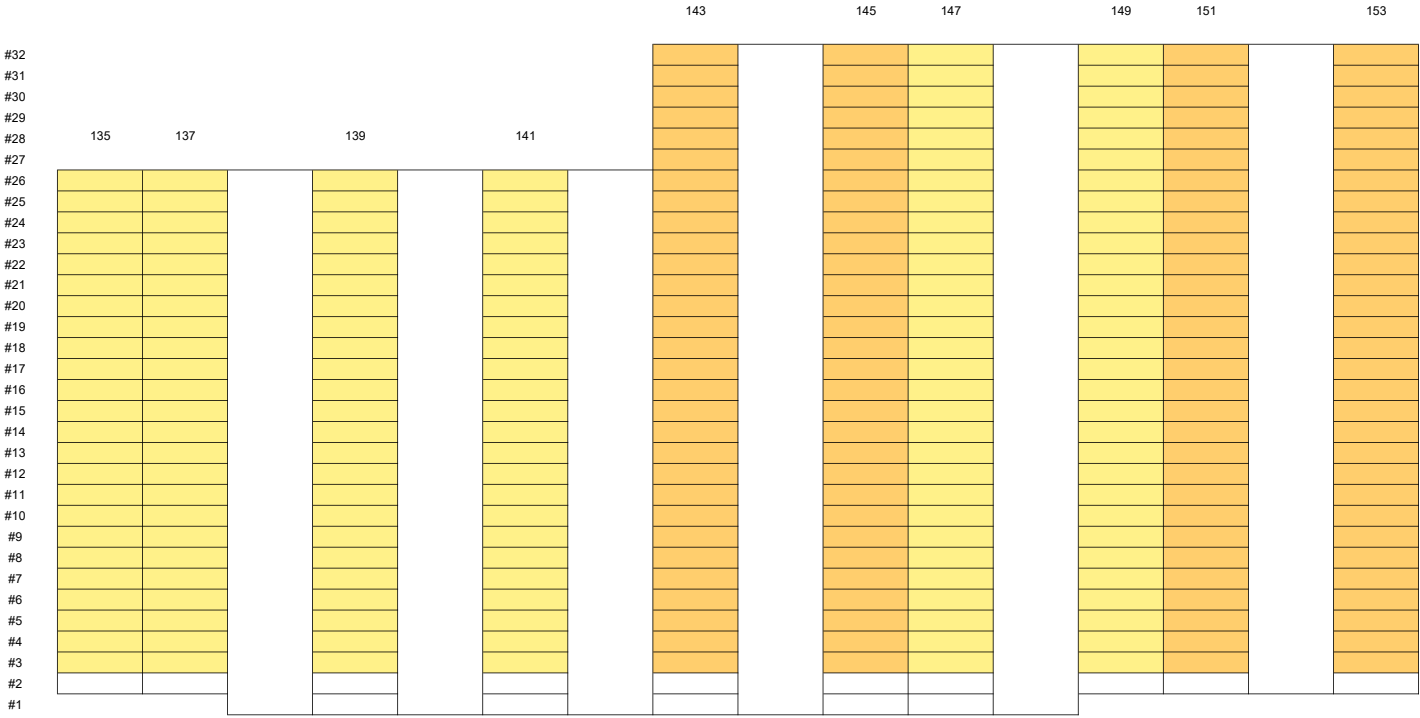
- All developments and facilities shown (including but not limited to their locations, form, massing and/or building heights) are subject to change and planning approval. The implementation of such proposed developments and facilities is subject to review from time to time by the relevant authorities.
- The developments and facilities shown (whether existing or proposed) may:
 - Include other ancillary uses allowed under URA's prevailing Development Control guidelines. Some examples include:
 - (i) Places of Worship (e.g. Chinese Temple or Church) may include columbarium,
 - (ii) Community Centres/Clubs may include preschools, and schools may be upgraded or built with higher-rise blocks, etc.
 - Be used as temporary construction sites by the relevant authorities.
- The use of the void deck in any apartment block, common property (such as precinct pavilion), carpark or stand-alone community building for future amenities/facilities (such as preschools, eldercare facilities, education centres, residents' network centres and day activity centres), commercial facilities (such as shops and eating houses), mechanical and electrical rooms and such other facilities, is subject to review from time to time.
- The residential blocks may be completed ahead of the proposed precinct facilities, so that flat buyers are able to collect the keys to their new homes earlier.
- Unless otherwise indicated in the sales brochure, all facilities within the project, including but not limited to roof gardens and sky terraces (if any), will be open to the public.
- To support the development of key infrastructure, temporary worker dormitories may be set up near residential areas by relevant authorities.

The information contained herein is subject to change at any time without notice and cannot form part of an offer or contract. While reasonable care has been taken in providing this information, HDB shall not be responsible in any way for any damage or loss suffered by any person whether directly or indirectly as a result of reliance on the said information or as a result of any error or omission therein.

UNIT DISTRIBUTION



BLOCK 912A



BLOCK 913A



UNIT DISTRIBUTION

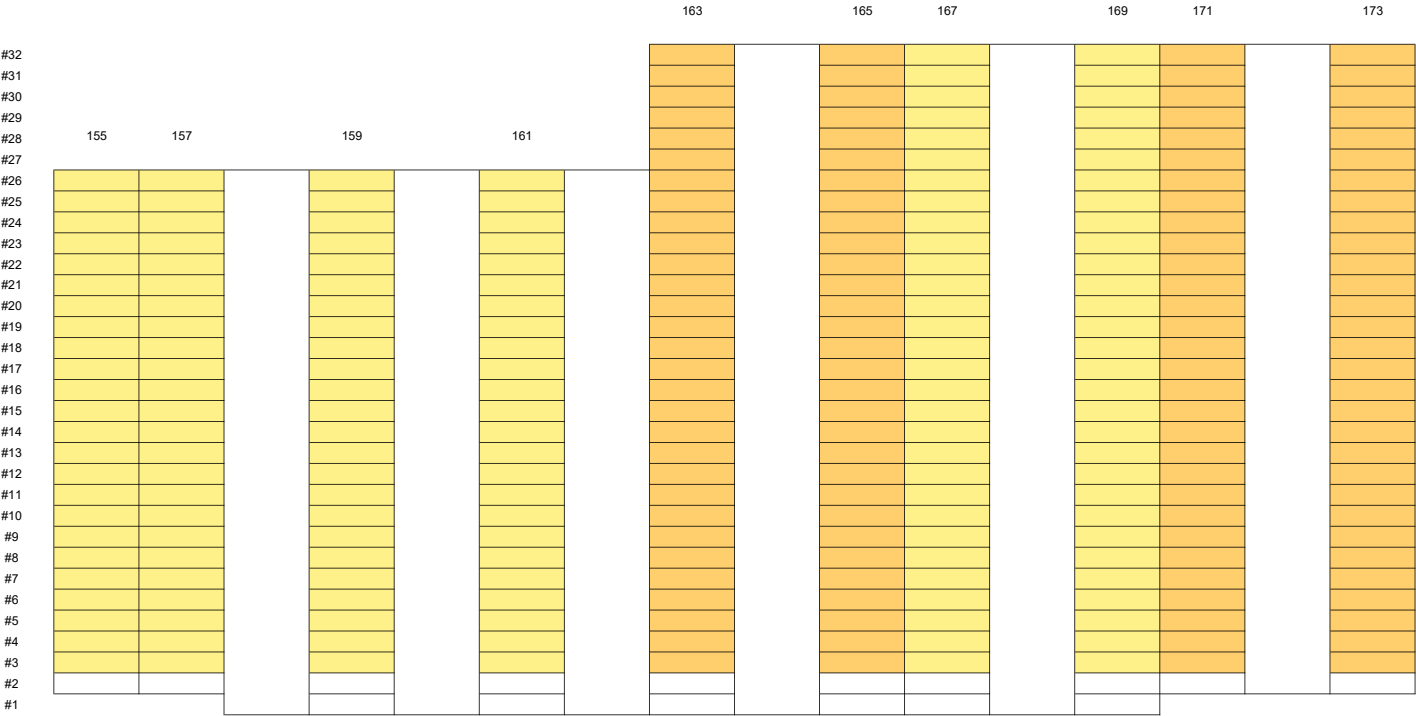
2 ROOM FLEXI (TYPE 1)

3 ROOM

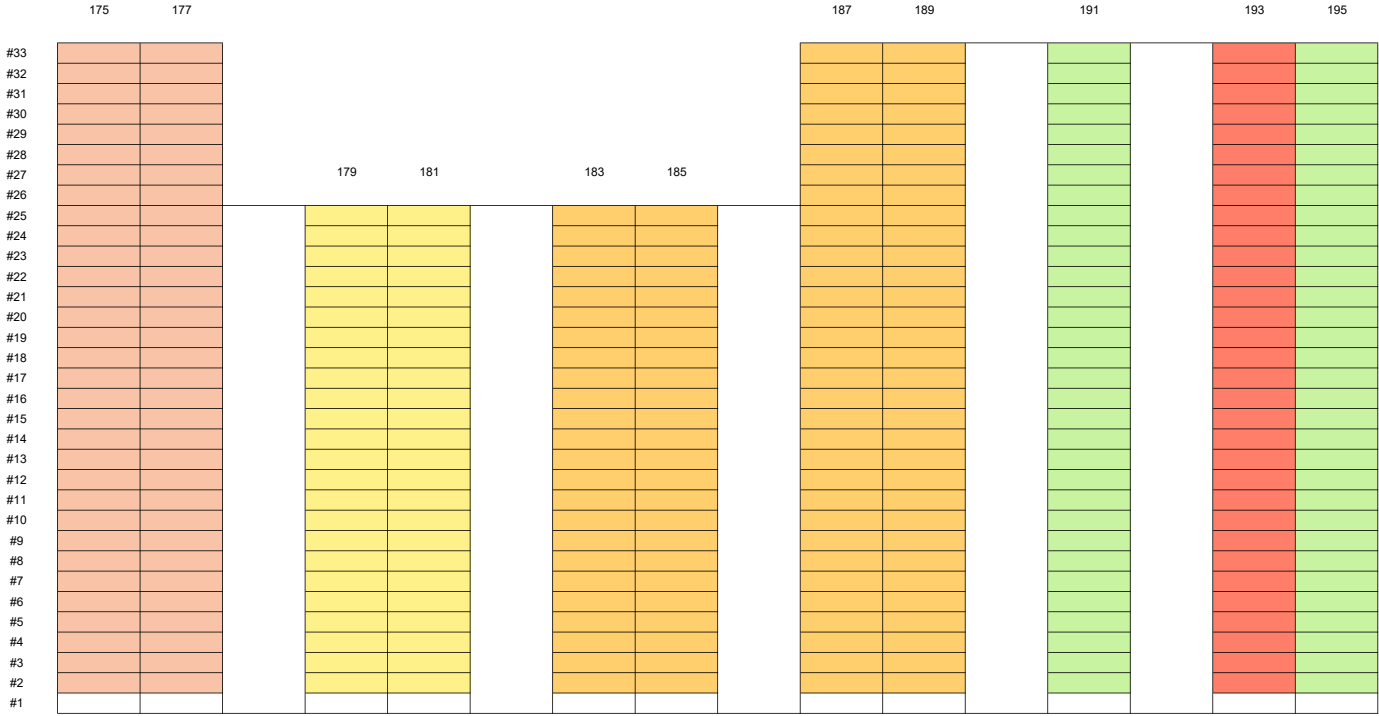
5 ROOM

2 ROOM FLEXI (TYPE 2)

4 ROOM



BLOCK 913B



BLOCK 913C



BLOCK 912A | 2ND TO 25TH STOREY FLOOR PLAN

WINDOW LEGEND :

W1 - THREE QUARTER HEIGHT WINDOW (APPROX. 550MM HIGH PARAPET WALL)

UNLESS OTHERWISE INDICATED ALL WINDOWS WILL BE STANDARD HEIGHT WINDOWS

SCALE 0 2 4 6 8 10 METRES

THE COLORED FLOOR PLAN IS NOT INTENDED TO DEMARCAT THE BOUNDARY OF THE FLAT



BLOCK 912A | 26TH STOREY FLOOR PLAN

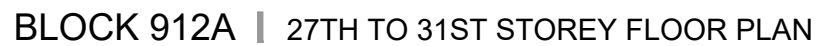
WINDOW LEGEND :

W1 - THREE QUARTER HEIGHT WINDOW (APPROX. 550MM HIGH PARAPET WALL)

UNLESS OTHERWISE INDICATED ALL WINDOWS WILL BE STANDARD HEIGHT WINDOWS

SCALE 0 2 4 6 8 10 METRES

THE COLORED FLOOR PLAN IS NOT INTENDED TO DEMARCATATE THE BOUNDARY OF THE FLAT



<p><u>WINDOW LEGEND :</u></p> <p>WI - THREE QUARTER HEIGHT WINDOW (APPROX. 550MM HIGH PARAPET WALL)</p>	<p>UNLESS OTHERWISE INDICATED ALL WINDOWS WILL BE STANDARD HEIGHT WINDOWS</p>	<p>SCALE 0 2 4 6 8 10 METRES</p>	<p>THE COLORED FLOOR PLAN IS NOT INTENDED TO DEMARCAT THE BOUNDARY OF THE FLAT</p>
---	---	----------------------------------	--



BLOCK 913A | 3RD TO 26TH STOREY FLOOR PLAN

UNITS AT AND ABOVE 12TH STOREY ARE HIGHER THAN THE MAIN GARDEN LEVEL OF BLOCK 913

WINDOW LEGEND :

W1 - THREE QUARTER HEIGHT WINDOW (APPROX. 550MM HIGH PARAPET WALL)

UNLESS OTHERWISE INDICATED ALL WINDOWS WILL BE STANDARD HEIGHT WINDOWS

SCALE 0 2 4 6 8 10 METRES

THE COLORED FLOOR PLAN IS NOT INTENDED TO DEMARCATATE THE BOUNDARY OF THE FLAT



BLOCK 913A | 27TH STOREY FLOOR PLAN

UNITS AT AND ABOVE 12TH STOREY ARE HIGHER THAN THE MAIN GARDEN LEVEL OF BLOCK 913

WINDOW LEGEND :

W1 - THREE QUARTER HEIGHT WINDOW (APPROX. 550MM HIGH PARAPET WALL)

UNLESS OTHERWISE INDICATED ALL WINDOWS WILL BE STANDARD HEIGHT WINDOWS

SCALE 0 2 4 6 8 10 METRES

THE COLORED FLOOR PLAN IS NOT INTENDED TO DEMARCATATE THE BOUNDARY OF THE FLAT



BLOCK 913A | 28TH to 32ND STOREY FLOOR PLAN

UNITS AT AND ABOVE 12TH STOREY ARE HIGHER THAN THE MAIN GARDEN LEVEL OF BLOCK 913

WINDOW LEGEND :

W1 - THREE QUARTER HEIGHT WINDOW (APPROX. 550MM HIGH PARAPET WALL)

UNLESS OTHERWISE INDICATED ALL WINDOWS WILL BE STANDARD HEIGHT WINDOWS

SCALE 0 2 4 6 8 10 METRES

THE COLORED FLOOR PLAN IS NOT INTENDED TO DEMARCATATE THE BOUNDARY OF THE FLAT



BLOCK 913B | 3RD TO 26TH STOREY FLOOR PLAN

UNITS AT AND ABOVE 12TH STOREY ARE HIGHER THAN THE MAIN GARDEN LEVEL OF BLOCK 913

WINDOW LEGEND :

W1 - THREE QUARTER HEIGHT WINDOW (APPROX. 550MM HIGH PARAPET WALL)

UNLESS OTHERWISE INDICATED ALL WINDOWS WILL BE STANDARD HEIGHT WINDOWS

SCALE 0 2 4 6 8 10 METRES

THE COLORED FLOOR PLAN IS NOT INTENDED TO DEMARCATATE THE BOUNDARY OF THE FLAT



BLOCK 913B | 27TH STOREY FLOOR PLAN

UNITS AT AND ABOVE 12TH STOREY ARE HIGHER THAN THE MAIN GARDEN LEVEL OF BLOCK 913

WINDOW LEGEND :

W1 - THREE QUARTER HEIGHT WINDOW (APPROX. 550MM HIGH PARAPET WALL)

UNLESS OTHERWISE INDICATED ALL WINDOWS WILL BE STANDARD HEIGHT WINDOWS

SCALE 0 2 4 6 8 10 METRES

THE COLORED FLOOR PLAN IS NOT INTENDED TO DEMARCATTE THE BOUNDARY OF THE FLAT



BLOCK 913B | 28TH to 32ND STOREY FLOOR PLAN

UNITS AT AND ABOVE 12TH STOREY ARE HIGHER THAN THE MAIN GARDEN LEVEL OF BLOCK 913

WINDOW LEGEND :

W1 - THREE QUARTER HEIGHT WINDOW (APPROX. 550MM HIGH PARAPET WALL)

UNLESS OTHERWISE INDICATED ALL WINDOWS WILL BE STANDARD HEIGHT WINDOWS

SCALE 0 2 4 6 8 10 METRES

THE COLORED FLOOR PLAN IS NOT INTENDED TO DEMARCATATE THE BOUNDARY OF THE FLAT



BLOCK 913C | 2ND TO 25TH STOREY FLOOR PLAN

UNITS AT AND ABOVE 12TH STOREY ARE HIGHER THAN THE MAIN GARDEN LEVEL OF BLOCK 913

FOR 2-ROOM FLEXI FLATS, THE NUMBER OF PANELS FOR THE SLIDING PARTITION BETWEEN THE BEDROOM AND LIVING ROOM WILL DIFFER DEPENDING ON THE SELECTION OF THE OPTIONAL COMPONENT SCHEME (OCS) WHERE APPLICABLE.

WINDOW LEGEND :

W1 - THREE QUARTER HEIGHT WINDOW (APPROX. 550MM HIGH PARAPET WALL)

UNLESS OTHERWISE INDICATED ALL WINDOWS WILL BE STANDARD HEIGHT WINDOWS

SCALE 0 2 4 6 8 10 METRES

THE COLORED FLOOR PLAN IS NOT INTENDED TO DEMARCATATE THE BOUNDARY OF THE FLAT



BLOCK 913C | 26TH STOREY FLOOR PLAN

UNITS AT AND ABOVE 12TH STOREY ARE HIGHER THAN THE MAIN GARDEN LEVEL OF BLOCK 913

FOR 2-ROOM FLEXI FLATS, THE NUMBER OF PANELS FOR THE SLIDING PARTITION BETWEEN THE BEDROOM AND LIVING ROOM WILL DIFFER DEPENDING ON THE SELECTION OF THE OPTIONAL COMPONENT SCHEME (OCS) WHERE APPLICABLE.

WINDOW LEGEND :

W1 - THREE QUARTER HEIGHT WINDOW (APPROX. 550MM HIGH PARAPET WALL)

UNLESS OTHERWISE INDICATED ALL WINDOWS WILL BE STANDARD HEIGHT WINDOWS

SCALE 0 2 4 6 8 10 METRES

THE COLORED FLOOR PLAN IS NOT INTENDED TO DEMARCATATE THE BOUNDARY OF THE FLAT



BLOCK 913C | 27TH TO 33RD STOREY FLOOR PLAN

UNITS AT AND ABOVE 12TH STOREY ARE HIGHER THAN THE MAIN GARDEN LEVEL OF BLOCK 913

FOR 2-ROOM FLEXI FLATS, THE NUMBER OF PANELS FOR THE SLIDING PARTITION BETWEEN THE BEDROOM AND LIVING ROOM WILL DIFFER DEPENDING ON THE SELECTION OF THE OPTIONAL COMPONENT SCHEME (OCS) WHERE APPLICABLE.

WINDOW LEGEND :

WI - THREE QUARTER HEIGHT WINDOW (APPROX. 550MM HIGH PARAPET WALL)

UNLESS OTHERWISE INDICATED ALL WINDOWS
WILL BE STANDARD HEIGHT WINDOWS

SCALE 0 2 4 6 8 10 METRES

THE COLORED FLOOR PLAN IS NOT INTENDED
TO DEMARCATÉ THE BOUNDARY OF THE FLAT

GENERAL SPECIFICATIONS FOR WOODLANDS NORTH GROVE

For 2-room Flexi (short lease)

Foundation

Piled foundations.

Structure

Reinforced concrete structural framework with reinforced concrete slabs.

Roof

Reinforced concrete roof slab with precast concrete secondary roofing.

Walls

All external and internal walls are constructed with reinforced concrete/ precast panels/ drywall partition system/ precast lightweight concrete partitions.

Windows

Aluminium framed windows with tinted glass.

Doors

Entrance	: laminated timber door and metal gate
Bedroom	: laminated UPVC sliding partition/ door, where applicable
Bathroom/ WC	: laminated UPVC folding door
Household Shelter	: metal door
Living/ Dining	: laminated UPVC folding door (optional)

Finishes

Living/ Dining/ Bedroom Floor	: vinyl strip flooring with laminated UPVC skirting (optional)
Kitchen/ Bathroom/ WC/ Household Shelter Floor	: glazed porcelain tiles
Kitchen/ Bathroom/ WC Walls	: glazed porcelain tiles
Ceilings/ Other Walls	: skim coated or plastered and painted

Fittings

Quality Locksets
 Water Closet Suite
 Clothes Drying Rack
 Grab Bars
 Wash basin with tap mixer, bath/ shower mixer with shower set (optional)
 Built-in kitchen cabinets with induction hob and cooker hood, kitchen sink and dish drying rack (optional)
 Built-in Wardrobe (optional)
 Window Grilles (optional)
 Water Heater (optional)
 Lighting (optional)

Services

Gas services and concealed water supply pipes
 Exposed sanitary stacks at Air-con ledge
 Concealed electrical wiring to lighting and power points (including water heater and air-conditioning points)
 Television points
 Data points

Important Notes

- 1) The Household Shelter is designed for use as civil defence shelter. The walls, ceiling, floor and door of the Household Shelter shall not be hacked, drilled, altered or removed.
- 2) Laminated UPVC door frame shall be provided to all Bedroom and Bathroom/ WC door openings.
- 3) Any unused or unoccupied open spaces in front of or nearby/ adjacent to the flat units are not available for purchase and the HDB will not entertain any request from the flat owners to purchase and/ or enclose the unused or unoccupied open spaces.
- 4) The details of services in a flat, e.g. gas pipes, water pipes, sanitary stacks, electrical wiring, television points, data points, etc. are not indicated on the plans.

You are advised to visit HDB's website at www.hdb.gov.sg for information on renovation rules.

GENERAL SPECIFICATIONS FOR WOODLANDS NORTH GROVE

For 2-room Flexi, 3-room, 4-room, 5-room

Foundation

Piled foundations.

Structure

Reinforced concrete structural framework with reinforced concrete slabs.

Roof

Reinforced concrete roof slab with precast concrete secondary roofing.

Walls

All external and internal walls are constructed with reinforced concrete/ precast panels/ drywall partition system/ precast lightweight concrete partitions.

Windows

Aluminium framed windows with tinted glass.

Doors

Entrance	: laminated timber door and metal gate
Bedroom	: laminated UPVC door (optional)
	: laminated UPVC sliding partition/ door for 2-room Flexi, where applicable
Bathroom/ WC	: laminated UPVC folding door (optional)
	: laminated UPVC folding door for 2-room Flexi
Household Shelter	: metal door
Service Yard	: aluminium framed door with glass

Finishes

Living/ Dining Floor	: polished porcelain tiles with laminated UPVC skirting (optional)
Bedroom Floor	: vinyl strip flooring with laminated UPVC skirting (optional)
Living/ Dining/ Bedroom Floor	: vinyl strip flooring with laminated UPVC skirting for 2-room Flexi (optional)
Kitchen/ Utility/ Bathroom/ WC/ Household Shelter Floor	: glazed porcelain tiles
Service Yard/ Balcony Floor (where applicable)	: glazed porcelain tiles with tile skirting
Kitchen/ Utility/ Bathroom/ WC Walls	: glazed porcelain tiles
Ceilings/ Other Walls	: skim coated or plastered and painted

Fittings

Quality Locksets
Water Closet Suite
Clothes Drying Rack
Wash basin with tap mixer, bath/ shower mixer with shower set (optional)

Services

Gas services and concealed water supply pipes
Exposed sanitary stacks (which can be located at Service Yard and Air-con ledge)
Concealed electrical wiring to lighting and power points (including water heater and air-conditioning points)
Television points
Data points

Important Notes

- 1) The Household Shelter is designed for use as civil defence shelter. The walls, ceiling, floor and door of the Household Shelter shall not be hacked, drilled, altered or removed.
- 2) Laminated UPVC door frame shall be provided to all Bedroom and Bathroom/ WC door openings.
- 3) Any unused or unoccupied open spaces in front of or nearby/ adjacent to the flat units are not available for purchase and the HDB will not entertain any request from the flat owners to purchase and/ or enclose the unused or unoccupied open spaces.
- 4) The details of services in a flat, e.g. gas pipes, water pipes, sanitary stacks, electrical wiring, television points, data points, etc. are not indicated on the plans.

You are advised to visit HDB's website at www.hdb.gov.sg for information on renovation rules.

DISCLAIMER

- 1) HDB owns the copyright in all information, maps, and plans of this brochure.
- 2) The content provided in this brochure should be read in conjunction with the corresponding sales model of this development. All information provided in the brochure and sales model are not intended to form part of any offer or contract for the sale of flats. They are provided for your general information only and are not intended to be, or to be relied upon as, statements or representations of fact, offers or warranties (whether expressly or impliedly) by HDB. At no time should any reliance be placed on the contents of this brochure and information reflected in the corresponding sales model. Any such reliance shall be at the sole risk and discretion of the recipient.
- 3) Visual representations such as pictures, art renderings, depictions, illustrations, photographs, drawings, as well as other graphic representations and references are only artistic impressions. They are provided for your general information only, and are not representations of fact.
- 4) The information on this project, including but not limited to the dimensions, areas, plans, colour schemes, descriptions, and specifications, are subject to change or review without notice at our sole discretion or if required by the relevant authorities.
- 5) We may at any time, without any notice and at our sole discretion, change any aspect of this project, including but not limited to the omission, amalgamation, increase, or reduction of amenities and facilities, colour schemes, design features, and specifications.
- 6) We will not entertain any request for alteration of the layout or specifications of a flat to suit individual needs.
- 7) While reasonable care has been taken in providing the information in this brochure, we do not warrant its accuracy. We shall not be responsible in any way for any damage or loss suffered by any person whether directly or indirectly as a result of reliance on the said information or as a result of any error or omission therein.
- 8) The floor areas shown are scaled strata areas and are subject to final survey.
- 9) The surrounding land use and proposed facilities (including but not limited to their locations, form, massing and/or building heights) as shown in the maps and plans are subject to change and planning approval. They may include ancillary uses allowed under the Urban Redevelopment Authority's prevailing Development Control guidelines. Housing projects may be located near roads, railways, airbases, construction sites and land used for non-residential purposes including but not limited to industrial, commercial or utility uses. Hence, residents may experience related disamenities including but not limited to higher noise levels and smell nuisance. For any housing project affected by environmental issues relating to air, water, soil quality or ambient noise, HDB will carry out development in compliance with the prevailing regulatory requirements and/or recommendations by professional experts.
- 10) We reserve the right to use or allow the use of any:

• Void deck of any apartment block

• Car park;

• Common property (such as precinct pavilion); or

• Standalone community building,

for:

• Future amenities/ facilities (such as preschools, eldercare facilities, education centres, residents' network centres, and day activity centres);

• Commercial facilities (such as shops and eating houses);

• Mechanical and electrical rooms; and

• Such other facilities as we deem fit.

11) This brochure does not and is not intended to provide full and complete information of the guidelines or requirements of the relevant authorities. You are advised to approach the relevant authorities directly for full information and details of these guidelines and requirements.

12) Without prejudice to the generality of the above, please also refer to "Important Notes" on page 1.
-
- HOUSING &
DEVELOPMENT
BOARD**
- Copyright © Housing & Development Board
All rights reserved. July 2025

OPTIONAL COMPONENT SCHEME

(2-ROOM FLEXI FLATS)

The Optional Component Scheme (OCS) provides convenience for flat buyers, and is offered on an opt-in basis. Choose the OCS items you want during your flat booking appointment. The cost of the OCS items will be added to the selling price of the booked flat.

All 2-room Flexi flats come with:

- Floor finishes in the bathroom, household shelter, and kitchen
- Wall tiles in the bathroom and kitchen
- Sliding partition/ door for bedroom, folding bathroom door
- Water closet suite in the bathroom



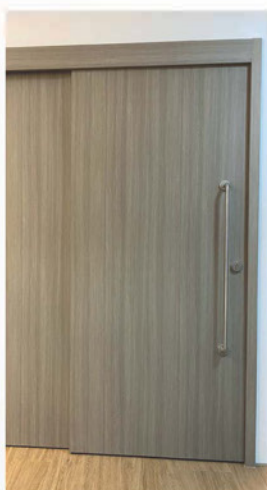
Grab bars will be installed for all short-lease flats to assist seniors in moving around the flats

FOR ALL 2-ROOM FLEXI FLATS

PACKAGE 1

- Flooring in the living/ dining room and bedroom
- Sliding partition, separating the living room and bedroom

(please refer to the flooring and furnished floor plans of your selected project)



PACKAGE 2

- Sanitary fittings, i.e. wash basin with tap mixer and shower set with bath/ shower mixer



Disclaimer: All displays and images shown here are strictly for reference only and are subject to change without notice. The displays and images shown here are conceptual and indicative only and the colour schemes, design, dimensions, type, tonal differences and specifications may differ from the actual fittings installed in the flat.

July 2025

OPTIONAL COMPONENT SCHEME

(2-ROOM FLEXI FLATS)

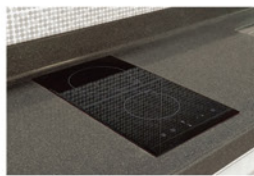
FOR SHORT-LEASE 2-ROOM FLEXI FLATS ONLY

PACKAGE 3 offers seniors the convenience of having a flat in move-in condition. It comprises:

SENIOR-FRIENDLY FITTINGS



- Built-in kitchen cabinets with induction hob and cooker hood, kitchen sink, tap and dish drying rack.



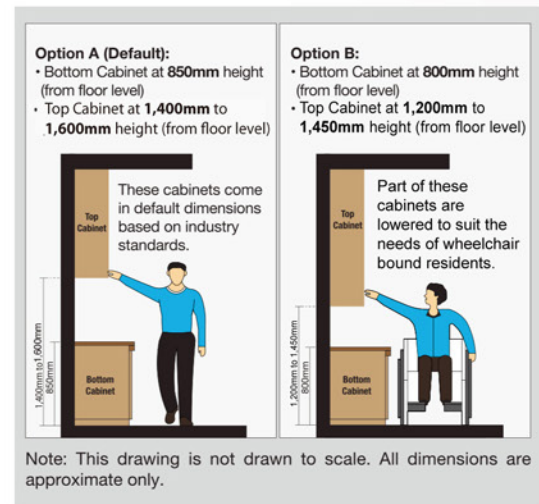
Here are some features of an induction hob:

- It does not produce an open flame
- Its cooking zone cools down faster
- It is easier to clean than a gas hob
- As it has a flat surface, pots placed on an induction hob are less likely to topple over.



- Kitchen cabinets come with mobile cabinets to provide knee space (especially for wheelchair users)
- Built-in bedroom wardrobe with a lower clothes hanging rod for easy reach

- An option to have a lower counter top height



- Folding door at the flexible space in the 2-room Flexi (Type 2) flats



OTHER FITTINGS



- Window grilles for safety and security



- Mirror



- Toilet roll holder



- Lighting



- Water heater

Buyers who opt for Package 3 must select Package 1.

Disclaimer: All displays and images shown here are strictly for reference only and are subject to change without notice. The displays and images shown here are conceptual and indicative only and the colour schemes, design, dimensions, type, tonal differences and specifications may differ from the actual fittings installed in the flat.

OPTIONAL COMPONENT SCHEME

(3-ROOM AND BIGGER FLATS)

The Optional Component Scheme (OCS) provides convenience for flat buyers, and is offered on an opt-in basis. Choose the OCS items you want during your flat booking appointment. The cost of the OCS item will be added to the selling price of the booked flat.

These flats come with:

- Floor finishes in the:
 - Bathrooms
 - Household shelter
 - Kitchen/ utility (3-room)
 - Kitchen and service yard (4-room and bigger flats)
- Wall tiles in the:
 - Bathrooms
 - Kitchen/ utility (3-room)
 - Kitchen (4-room and bigger flats)
- Water closet suite in each bathroom

YOU CAN CHOOSE TO HAVE THE FOLLOWING ITEMS INSTALLED IN YOUR BOOKED FLAT:

- Floor finishes in the:
 - Living/ dining room
 - Bedrooms
 - Dry kitchen and balcony (if applicable)
- Internal doors + sanitary fittings
 - Wash basin with tap mixer
 - Shower set with bath/ shower mixer



Wash basin with tap mixer in attached bathroom



Wash basin with tap mixer



Handheld shower set with bath/ shower mixer

Disclaimer: All displays and images shown here are strictly for reference only and are subject to change without notice. The displays and images shown here are conceptual and indicative only and the colour schemes, design, dimensions, type, tonal differences and specifications may differ from the actual fittings installed in the flat.